

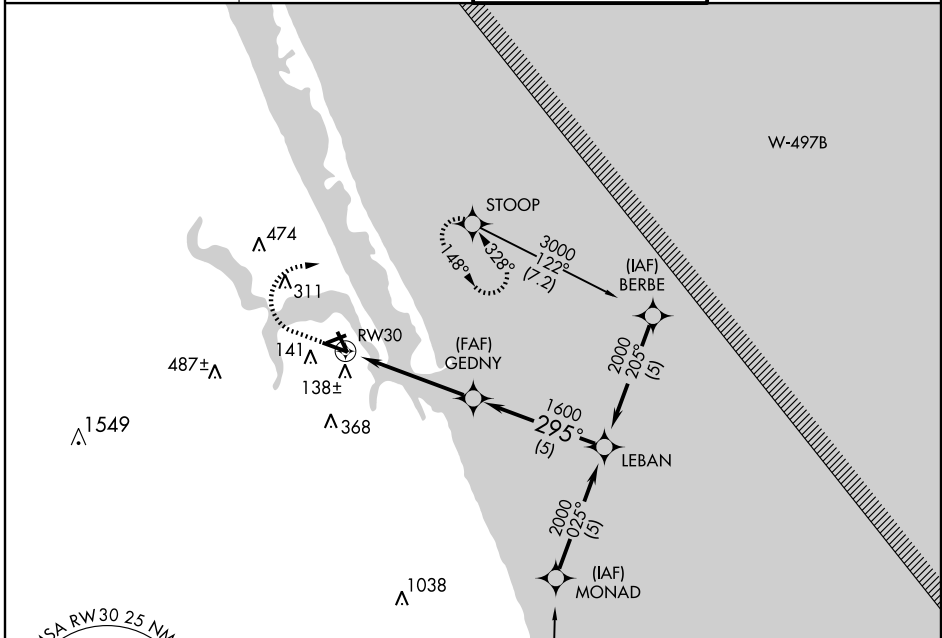
APP CRS	Rwy ldg	5366
295°	TDZE	18
	Apt Elev	18

GPS RWY 30

STUART/ WITHAM FIELD (SUA)

<p>▽ NA</p>	<p>MISSED APPROACH: Climb to 600 then climbing right turn to 3000 direct STOOP WP and hold.</p>		
--------------------	---	--	--

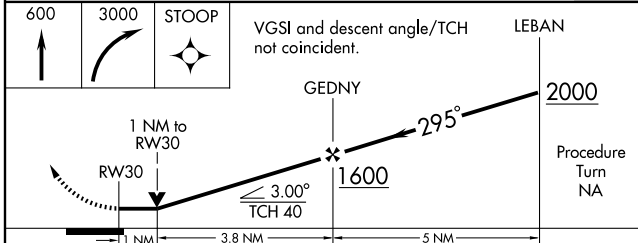
<p>ATIS</p> <p>134.475</p>	<p>PALM BEACH APP CON</p> <p>128.3 387.1</p>	<p>STUART TOWER ★</p> <p>126.6 (CTAF) 0</p>	<p>GND CON</p> <p>121.7</p>
-----------------------------------	---	--	------------------------------------



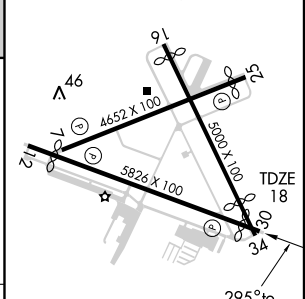
SE-3, 22 DEC 2005 to 19 JAN 2006

SE-3, 22 DEC 2005 to 19 JAN 2006

<p>600</p> <p>3000</p> <p>STOOP</p>	<p>VGSI and descent angle/TCH not coincident.</p>	<p>LEBAN</p> <p>2000</p>
-------------------------------------	---	--------------------------



ELEV 18	Rwy 12 ldg 5166'
	Rwy 16 ldg 4665'
	Rwy 25 ldg 4252'
	Rwy 30 ldg 5366'
	Rwy 34 ldg 4120'



CATEGORY	A	B	C	D
S-30	380-1	362 (400-1)		380-1¼ 362 (400-1¼)
CIRCLING	460-1 442 (500-1)	480-1 462 (500-1)	480-1½ 462 (500-1½)	580-2 562 (600-2)

REIL Rwsy 12 and 30 0
MIRL Rwsy 12-30 and 7-25 0