

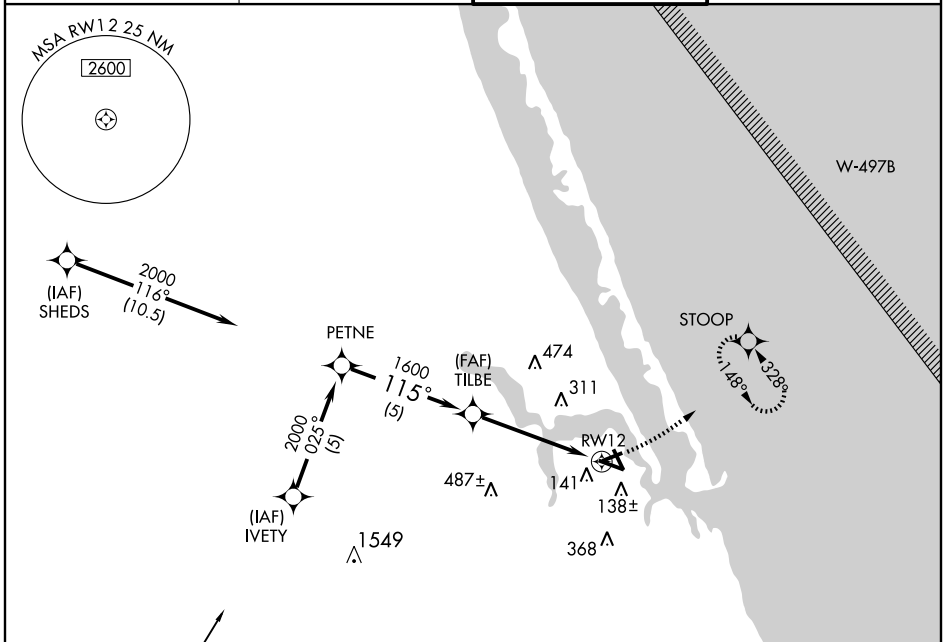
GPS RWY 12

STUART/ WITHAM FIELD (SUA)

APP CRS	Rwy ldg	5166
115°	TDZE	18
	Apt Elev	18

<p>▽ △ NA</p>		<p>MISSED APPROACH: Climbing left turn to 3000 direct STOOB WP and hold.</p>	
---------------------------------	--	--	--

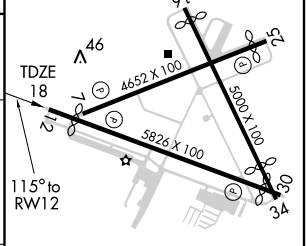
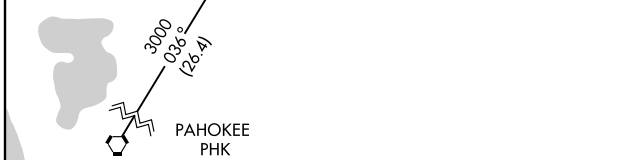
<p>ATIS 134.475</p>	<p>PALM BEACH APP CON 128.3 387.1</p>	<p>STUART TOWER ★ 126.6 (CTAF) 0</p>	<p>GND CON 121.7</p>
--------------------------------	--	---	---------------------------------



SE-3, 22 DEC 2005 to 19 JAN 2006

SE-3, 22 DEC 2005 to 19 JAN 2006

ELEV 18	Rwy 12 ldg 5166'
	Rwy 16 ldg 4665'
	Rwy 25 ldg 4252'
	Rwy 30 ldg 5366'
	Rwy 34 ldg 4120'



Procedure Turn	NA
Distance	5 NM, 3.6 NM, 1.2

CATEGORY	A	B	C	D
S-12	440-1	422 (500-1)	440-1¼	422 (500-1¼)
CIRCLING	460-1 442 (500-1)	480-1 462 (500-1)	480-1½ 462 (500-1½)	580-2 562 (600-2)

REIL Rws 12 and 30 0
MIRL Rws 12-30 and 7-25 0